

State of Wyoming Corner Record

(In compliance with the CORNER PERPETUATION AND FILING ACT, Wyoming Statutes, 1997 Section 33-29-140 et. seq, and the Rules and Regulations of the Board of Professional Engineers and Professional Land Surveyors)

Reverse side of this form may be used if more space is needed.

Record of original survey and citation of source of historical information (if corner is lost or obliterated). Description of corner monumentation evidence found and/or monument and accessories established to perpetuate the location of this corner. Sketch of relative location of monument, accessories, and reference points with course and distance to adjacent corner(s) (if determined in this survey). Method and rationale for reestablishment of lost or obliterated corner.

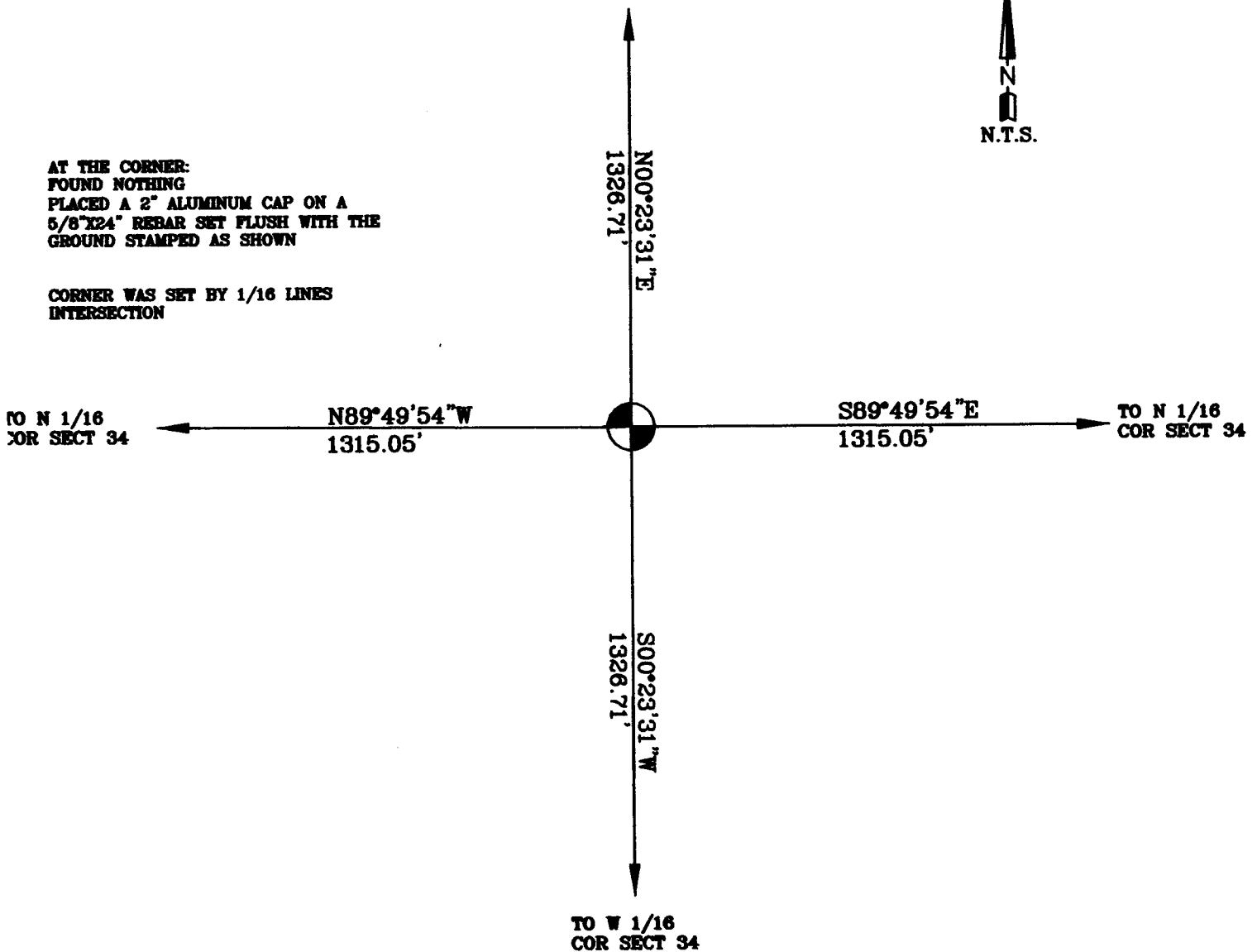
G.L.O. RECORD:
NOTHING SET

TO W 1/16
COR SECT 34



AT THE CORNER:
FOUND NOTHING
PLACED A 2" ALUMINUM CAP ON A
5/8" X 24" REBAR SET FLUSH WITH THE
GROUND STAMPED AS SHOWN

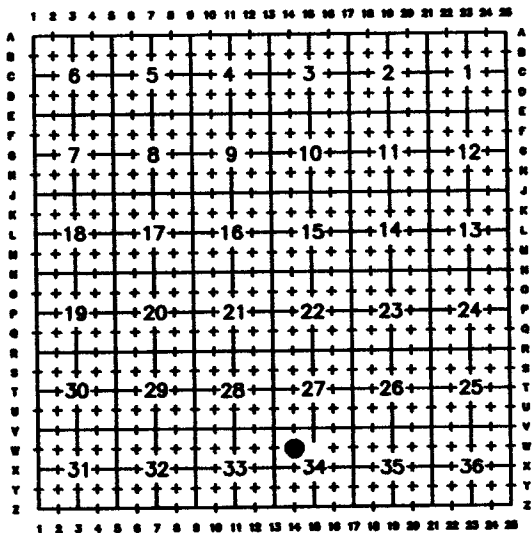
CORNER WAS SET BY 1/16 LINES
INTERSECTION



Date of Field Work: 10/15/06

Office Reference: HUTTON

Cross Index Plat



Firm/Agency, Address

Western R&D, Ltd.
5909 Yellowstone Rd., Suite B
Cheyenne, Wyoming 82009

This corner record was prepared
by me or under my direction
and supervision.

SEAL & SIGNATURE

Telephone Number: (307) 632-5656

● Denotes Monument Set



Cross-Index No: W-14

Corner Name NORTHWEST 1/16 CORNER Section 34, T 17 N, R 64 W, 6th P.M.

County: LARAMIE Wyoming

SRRPEPLS/PLSW: March 1994; PLSW January 1998